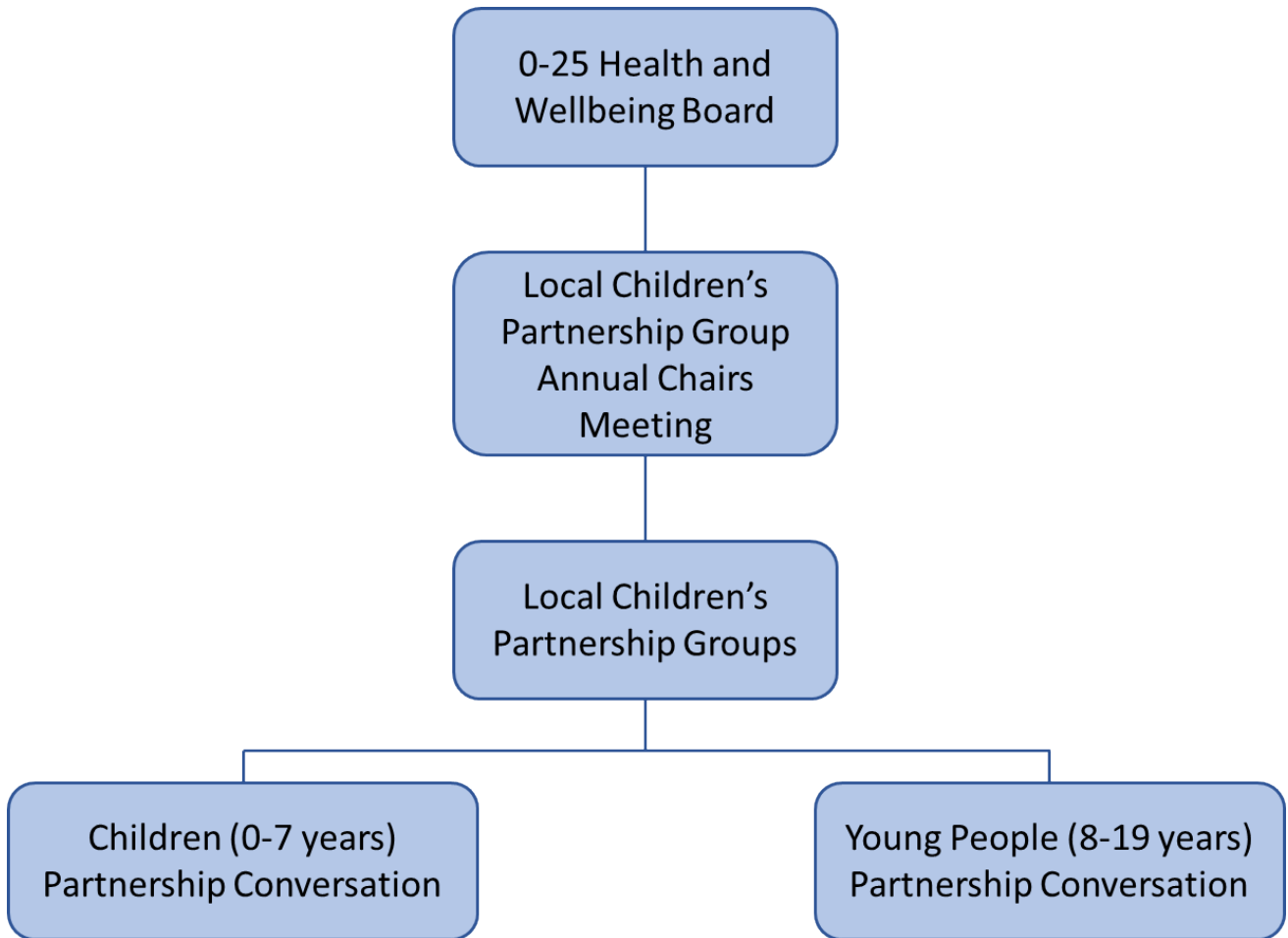


Appendix A: Summary of Field Work Results

	LCPGs	YAGs	DABs
Areas of commonality	<ul style="list-style-type: none"> • Strategic governance structures unclear and lack of accountability from partner organisations to deliver agreed actions • Lack of join up with wider strategic forums • Crossover of targets, priorities and resulting discussions • Element of LCPG dashboard are reflected in DAB/YAG targets • Some cross representation but variance in attendance and participation and insufficient strategic alignment • Duplicated discussions at meetings due to different membership • All rely on KCC EHPS to co-ordinate and take action • YAG and DAB have significantly more similarities as focused on stakeholder engagement • Lack of focus on 5 – 10-year olds who fall outside of the YAG and DAB remit • Lack of clarity as to whether a strategic or operational forum 		
Strengths - what is working well	<ul style="list-style-type: none"> • Wide range of partners • Single strategic multi-agency group covering 0 – 25 years • Co-ordination by EHPS with some sub groups • Decision making, and monitoring of Early Help grants • Some involvement of voluntary sector • Partners value networking to hear other perspectives 	<ul style="list-style-type: none"> • Key operational leaders and practitioners attend and align approaches • Some groups well attended • Local action plans agreed collaboratively based on needs • Opportunity for young people to express views and influence decision makers • Good forum for information sharing on youth offer and networking for all youth providers 	<ul style="list-style-type: none"> • Key operational leaders and practitioners attend and align approaches • Some groups well attended with a range of partners • Well established and functioning annual conversation review process • Annual review of data • Partners reviewing progress against action plans and service delivery • Good forum for information sharing and networking for all local early year's services
Development - what needs to improve	<ul style="list-style-type: none"> • Clarity on interface and links with other groups – where working to achieve outcomes and reporting structures/expectations/mechanisms between three groups and HWBB • Better representation, attendance and participation of partners with the right people attending including 	<ul style="list-style-type: none"> • Greater links with other groups • Clarification on nature of group i.e. operational or strategic • Can be information sharing and networking rather than strategic governance and joint planning and working 	<ul style="list-style-type: none"> • No clear multi-agency governance process if areas need to be escalated • Clarification of nature of groups i.e. operational or strategic as this changes scope of group • Capacity of partners with some attending several meetings

	LCPGs	YAGs	DABs
	<p>schools. Where schools attend it is more meaningful</p> <ul style="list-style-type: none"> • Strengthen the 0 – 25 preventative work, early years and health as currently mainly school age focus • Increased involvement of voluntary organisations • Better use of resources attached to operation of meetings • Meetings can be more constructive and efficient • Strategic feedback should be shared from all partners to allow better joined up working 	<ul style="list-style-type: none"> • Attendance and active participation need to improve • Accountability of partners and lack of commitment from some attendees to contribute to action plans • Capturing service user voice • Operational sub groups in place in one district • There should be less pressure to involve young people as there are better forums available to have interface with young people 	<ul style="list-style-type: none"> • Would benefit from developing a more strategic early years group • Inconsistent local community partnerships • Needs more scrutiny and challenge to hold agencies to account • Need active participation from agencies to give progress updates
Governance	<ul style="list-style-type: none"> • Clearer governance to link to HWBB with ‘golden thread’ co-ordinating work and responsibilities • Needs official buy in and accountability around delivery • Some chairs meeting regularly and feed into local Health and Wellbeing groups. • Meets bi-monthly 	<ul style="list-style-type: none"> • Unclear governance • Need to ensure LCPG is informed of priorities • Chairs meet regularly with EHPS • County interface with YAG is limited • Quarterly meetings 	<ul style="list-style-type: none"> • Unclear governance – focus appears to be SureStart rather than strategic needs 0 – 8 yrs • No longer regular reporting process • EHPS overseeing review • DAB chairs report to twice yearly meetings • Quarterly meetings
Data	<ul style="list-style-type: none"> • Dashboard/scorecard in place but not effective as information difficult to understand, not up-to-date and inaccurate • Improved and more meaningful data set is needed to determine progress • Local action plans in place 	<ul style="list-style-type: none"> • Data packs in place • Annual youth action plan monitors progress against agreed priorities • Better links to outcomes • Lack of insight into district issues 	<ul style="list-style-type: none"> • Data pack in place • Annual measures are useful to show progress being made and direction of travel • Better links to outcomes • Sharing of health and other agency data would be useful

Appendix B: Proposed District Governance Structure



Appendix C: Outline Proposal for LCPG Chairs Induction Training

Coproduction Training Session: A half day training for staff at all levels across KCC designed and delivered by young people from HeadStart Kent, Kent Youth County Council and Virtual Schools Kent.

- Developing an understanding of coproduction, why we do it and the benefits of coproduction for the organisation and for young people
- An insight to young people in Kent, learning about the pressures & stressors they face in Kent today
- Planning for coproduction and how to make it a success for young people and the organisation
- Understanding where coproduction already happens within the district and across Kent and how to engage with these different groups
- Action planning time to think about and work with the young people to plan how children, young people and parents/carers can be involved in the design, delivery and evaluation of services

Recruitment of young people from local groups to deliver this training should be ongoing. All resources for training the young people will be made available to Youth Hub Delivery managers to ensure it is continued locally.

HeadStart Kent plan to develop this course into an eLearning course, as part of their Sustainability Plan. This will be developed following further rollout of the staff training and feedback from staff, to be completed by the end of the HeadStart programme.

Practical Resources for Engagement: This half day session will focus on strengthening the skills of participants to ensure they have practical tools and activities for engaging young people in discussions and capturing their voice in informal and creative ways to influence decision making.

This can be delivered centrally as part of general programme of training by Youth Participation Coordinator twice a year, or locally in areas by Youth Hub Delivery Managers. In this case the session plan, resources and a practical resources toolkit will be available via the HeadStart Resilience Hub.